

2803/304

**PATTERN CONSTRUCTION III AND GRADING  
TECHNIQUES II PRACTICAL**

June/ July 2020

Time: 4 hours



**THE KENYA NATIONAL EXAMINATIONS COUNCIL**

**DIPLOMA IN FASHION DESIGN AND CLOTHING TECHNOLOGY  
MODULE III**

**PATTERN CONSTRUCTION III AND GRADING TECHNIQUES II PRACTICAL**

**4 hours**

**INSTRUCTIONS TO CANDIDATES**

1. *You should have the following items for this examination:*

- (i)  $\frac{1}{4}$  scale ruler;
- (ii) 30 cm ruler;
- (iii) pencil (2H);
- (iv) rubber/ eraser;
- (v) French curves;
- (vi) sheets of plain papers (photocopying type, size A4);
- (vii) a pair of paper scissors;
- (viii) glue/ sellotape;
- (ix) tracing wheel/ a pair of compasses;
- (x) paper pins;
- (xi) tracing paper;
- (xii) calculator.

2. *All stages of pattern development must be clearly shown.*

3. *All measurements used at all grading points must be indicated.*

**This paper consists of 5 printed pages.**

**Candidates should check the question paper to ascertain that all the pages are printed as indicated and that no questions are missing.**

## TASKS

- Using the measurements provided, draft the classic shirt block.

Neck size = 41 cm  
Chest = 104 cm  
Scye depth = 25.2 cm  
Natural waist depth = 45 cm  
Half back = 20.5 cm  
Shirt length = 81 cm  
Pleat allowance = 2 cm  
Facing width = 3.5 cm  
Button stand = 1.5 cm

- Trace out the flat blocks provided and develop final patterns for the overall style sketch given on page 3:

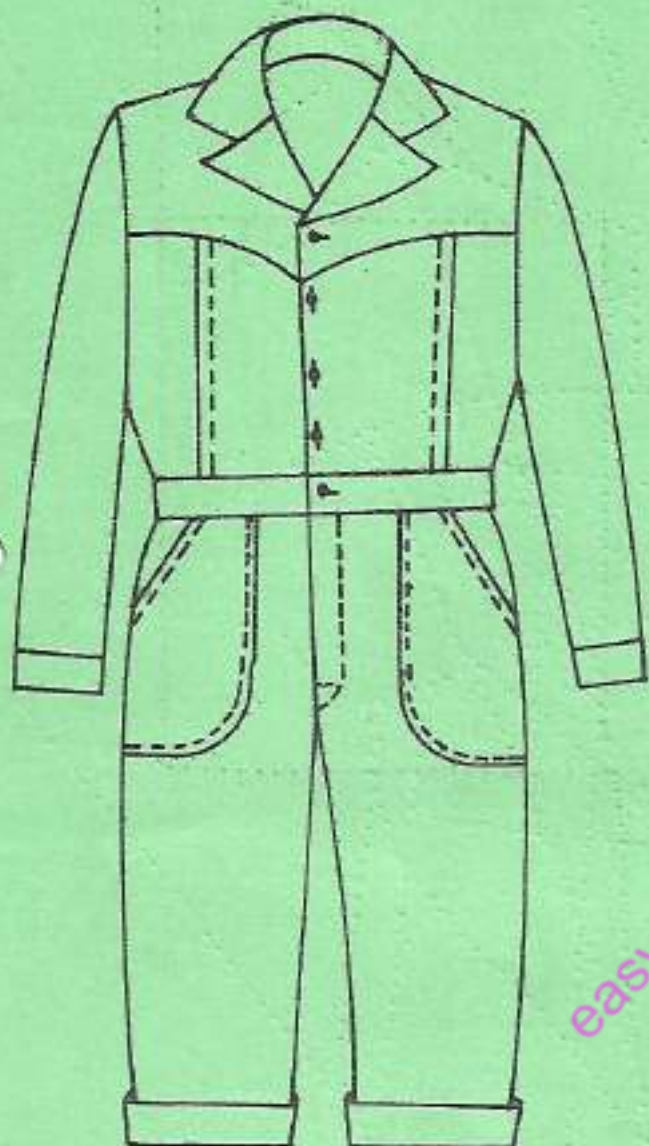
### Measurements

Seat - 102 cm  
Bodyrise - 27 cm  
Full length - 106.5 cm  
Bottom width - 25 cm  
Tuck width - 2 cm  
Sleeve length - 89 cm  
Cuff size - 23 cm  
Cuff depth - 4 cm

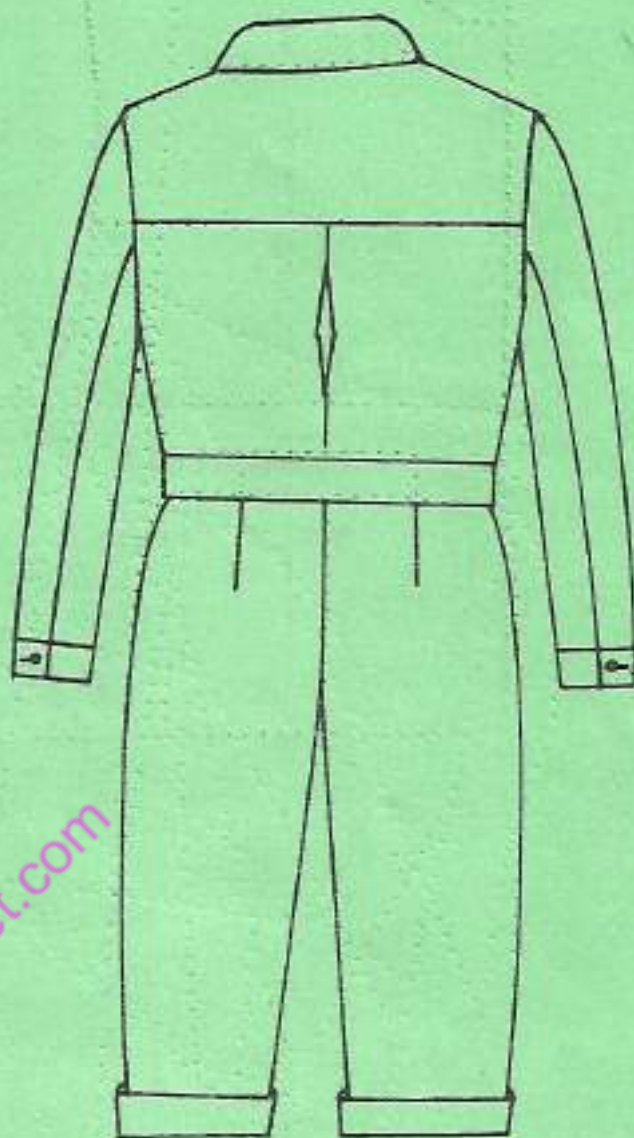
**NB:** The sleeve has **no underarm** seam.  
Omit seam and hem allowances.

- Trace out the dress block provided on page 5 and grade one size down.



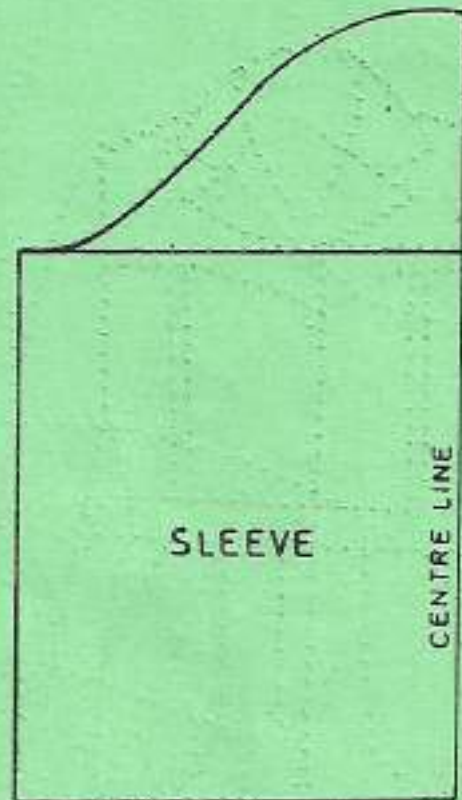
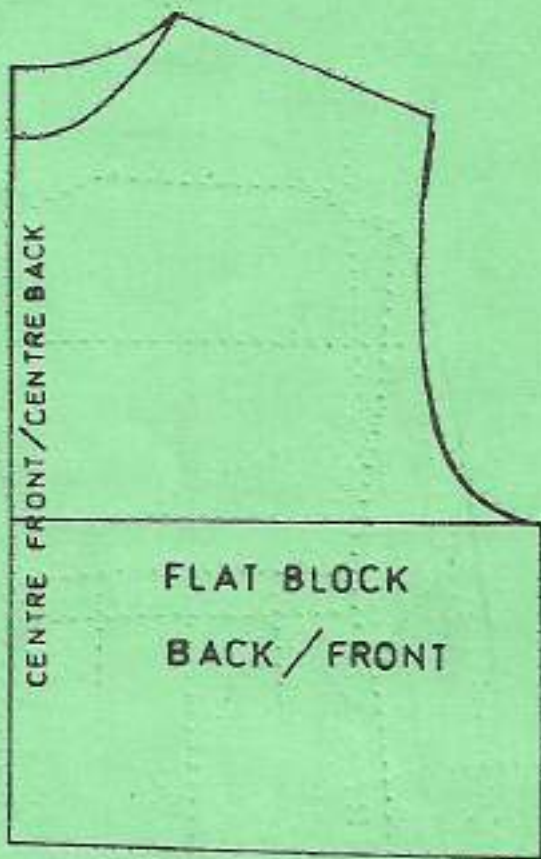


FRONT VIEW



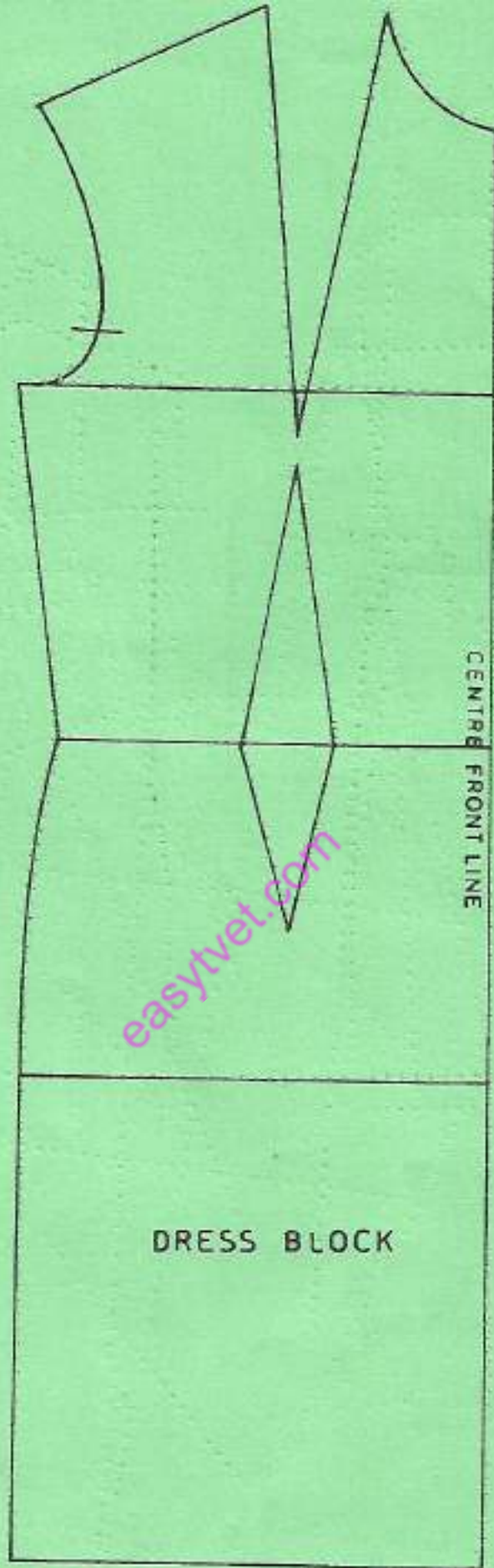
BACK VIEW

easytvvet.com



[easytvvet.com](http://easytvvet.com)





**THIS IS THE LAST PRINTED PAGE.**